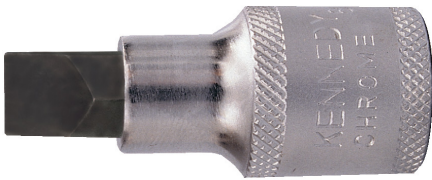


Yamoto - 1/2 inch Drive, 10mm Screwdriver Socket Bits



For insertion and removal of fasteners and fixings using 1/2 square drive tooling. Made from chrome vanadium steel, fully chrome plated with a mirror finish and aluminium-free.

Specifications	Details
Product Number	YMT5827810GTSK
Brand	Yamoto
Socket Depth	Standard
Drive Size	1/2 inch
Bit Length	20mm
Overall Length	55mm
Material	Chrome Vanadium Steel
Drive Type	Square
Bit Type	Slotted
Socket Size	10mm