

Bore Gauges

SERIES 511 – Bore Gauge

- Now offers a longer plunger stroke while maintaining original accuracy.
- Carbide is used for the contact point ensuring high durability and wear resistance.
- This model reduces the influence of heat from the operator's hand by 50% by increasing the grip size and making the grip hollow-structured, thereby retaining high-accuracy measurement.
- Interchangeable washers 0.5 mm thick are supplied as standard accessories to enable setting in small steps.
- Optional extension rods can be attached for measuring deep holes (see page C-35).
- An optional inside-length standard, such as a setting ring or Inside Micro Checker (see pages C-37 to C-38 or page C-24, respectively), is required for accurately setting the gauge before measurement.



511-723-20



511-712-20

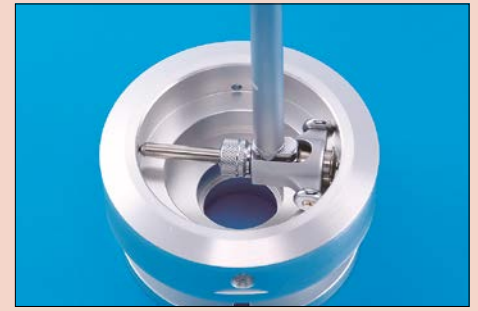
Specifications

Metric

Code No.	Range	Measuring force	Content of set			Probing depth	
			Bore gauge	Dial indicator	Anvils		
Graduation 0.001 mm							
511-721-20	18 - 35 mm	4 N or less	511-701	2109AB-10	9 pcs.	100 mm	
511-722-20	35 - 60 mm		511-702		6 pcs.		
511-723-20	50 - 150 mm	5 N or less	511-703		11 pcs.	150 mm	
511-724-20	100 - 160 mm		511-704		13 pcs.		
511-725-20	160 - 250 mm	6 N or less	511-705		6 pcs.	250 mm	
511-726-20	250 - 400 mm		511-706		5 pcs.		
Graduation 0.01 mm							
511-711-20	18 - 35 mm	4 N or less	511-701	2046AB	9 pcs.	100 mm	
511-712-20	35 - 60 mm		511-702		6 pcs.		
511-713-20	50 - 150 mm	5 N or less	511-703		11 pcs.	150 mm	
511-714-20	100 - 160 mm		511-704		13 pcs.		
511-715-20	160 - 250 mm	6 N or less	511-705		6 pcs.	250 mm	
511-716-20	250 - 400 mm		511-706		5 pcs.		
Bore gauge sets							
Code No.	Range	Bore gauge	Dial indicator				
511-921-20	18 - 150 mm	511-701	2046AB				
511-922-20		511-702	2109AB-10				
511-925-10		511-703	543-310B				

Technical Data

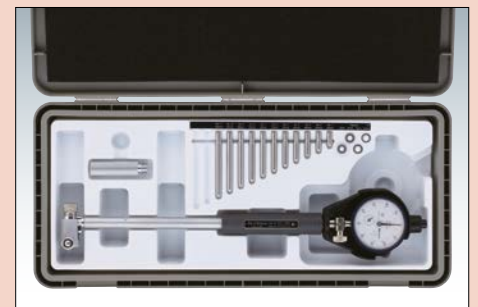
Accuracy: 2 μm / .00008"
 Repeatability: 0.5 μm / .00002"
 Narrow-range accuracy: 1 μm / .00004"



The powerful self-centering action ensures accuracy.



New grip improves accuracy during prolonged use.



511-713-20



511-921-20