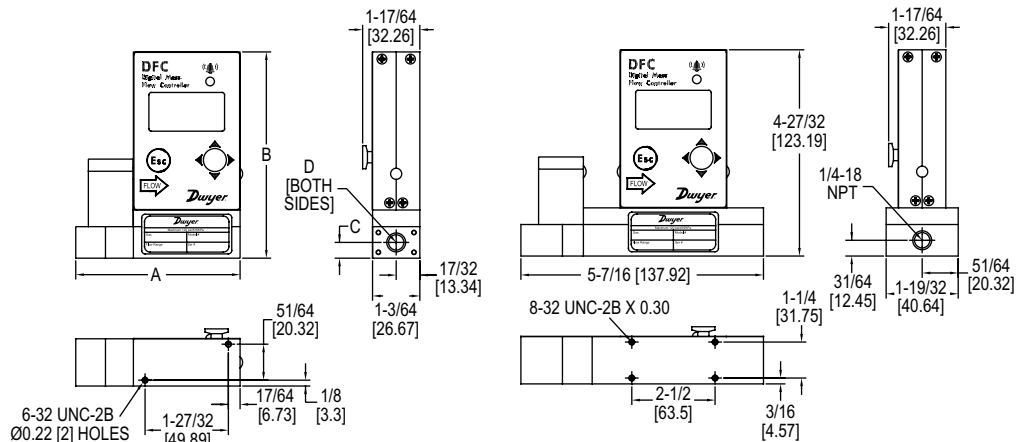


DIGITAL FLOW CONTROLLER

Multi-Parameter, Multi-Gas, Field-Configurable



Ranges 0.5 mL/min-20L/min (DFC-01/50)

Ranges 21 L/min-100 L/min (DFC-51/56)

Range	A in [mm]	B in [mm]	C in [mm]	D
0.5 mL/min-50 mL/min	3-11/16 [93.47]	4-37/64 [116.33]	11/32 [8.64]	10-32 UNF
51 mL/min-20 L/min	3-21/32 [92.96]	4-13/32 [111.76]	11/32 [8.64]	1/8 NPT

The **Series DFC Digital Flow Controller** combines a straight tube sensor with a restrictor flow element to provide accurate readings and control. Simultaneous displays of mass flow, volumetric flow, pressure and temperature parameters promote applications in a variety of industries.

BENEFITS/FEATURES

- Able to quickly see changes due to fast <20 ms response rate
- Simple setup using configuration/calibration software
- Works for a variety of application with up to 90 different user selectable gases and gas mixes
- Meet application requirements with high accuracy and repeatability
- Minimize downtime with self-diagnostics through status LED or OLED indication

APPLICATIONS

- Gas flow measurement
- Gas flow control
- Operating pumps and valves
- Process equipment
- Vacuum process
- Scientific and analytical
- Bioreactors and surface depositions

SPECIFICATIONS

Service: Clean, non-corrosive gases compatible with wetted parts.
Wetted Materials: 316 SS, 416 SS, high temperature polyamide, alumina ceramic, epoxy, silicone, glass, gold. FKM O-rings.
Accuracy: ±(0.5% of reading + 0.2% FS).
Repeatability: ±0.2% FS.
Response Time: 150 ms.
Output: 0-5 VDC, 4-20 mA and 0-10 VDC.
Relay Rating: Programmable solid state relay.
Max. Particulate Size: 20 microns.
Temperature Limits: 14 to 140°F (-10 to 60°C).
Power Supply: 12-26 VDC.
Process Connections: 1/8" compression fitting for flow rates ≤ 10 L/min (-005, -010); 1/4" for ≤ 50 L/min (-050); 3/8" for ≤ 100 L/min (-100).
Pressure Limits: 120 psig (8.27 bar).
Leak Integrity: 1 x 10⁻⁹ sccs of helium.
Display: 2 x 16 character OLED.
Weight: DFC-01/50: 1.40 lbs (0.635 kg); DFC-51/56: 1.66 lbs (0.755 kg).
Compliance: CE.

MODEL CHART								
Example	DFC	-22	010	-V	-A	L	A 2	DFC-22010-V-ALA2
Series	DFC							Digital flow controller
Range*		22						0 to 100 mL/min
		26						0 to 200 mL/min
		32						0 to 500 mL/min
		37						0 to 1000 mL/min
		39						0 to 2 L/min
		43						0 to 5 L/min
		48						0 to 10 L/min
		56						0 to 100 L/min
Body Size		005						Very low flow
		010						Low flow
		050						Medium flow
		100						High flow
Seal Material				V				Fluoroelastomer
Fittings					A			1/8" compression (very low, low)
					B			1/4" compression (medium)
					D			3/8" compression (high)
Display						L		LED display
Output Signal							A	0-5 VDC default (4-20 mA, 0-10 VDC display selectable)
Digital Interface							2	RS-232 default (RS-485 display selectable)
							3	RS-232 default with Modbus® (RS-485 display selectable), body size 005, 010, 050
								RS-232 default with Modbus® (RS-485 display selectable), body size 100

*Consult factory for ranges from 0-0.5 mL/min up to 0-100 L/min.

ACCESSORIES	
Model	Description
GFM-110P	110 V power supply
GFM-220PE	220 V power supply
Note: 1.5 ft RS-232 interface 3-wire 9-pin D connector included. For RS-485 contact factory for A-DFM-CBL-A485DP 3 ft RS-485 3.5 mm stereo-audio connection with stripped ends available for purchase.	